

Fabric Takeaway Box

This pattern is designed to be fast to cut and sew, but does not make the most economical use of fabric. To be more frugal, cut the sides separately and stitch them together, rather than cutting the box as one piece.

You will need:

- Two fat quarters of fabric (a bit less if you're using the same fabric for the inside and outside of the box).
- Extra-stiff, double-sided iron-on interfacing, about a fat quarter in size.



1. Print out two copies of the template pieces on separate sheets paper, cut out and tape together so the pattern looks like this:

2. Lay out your fabric and interfacing in a sandwich, right sides of the fabric outwards, with the interfacing inbetween. Pin down the pattern well, cut out the three layers in one piece.

3. Iron the sandwich together.

Tip: It's much easier if you don't cut the 'hook' bit of the pattern until you've ironed the sandwich together.

4. Satin stitch all the way around.

5. Satin stitch sew the four edges of the box together, up to the mark on the pattern where the top starts.

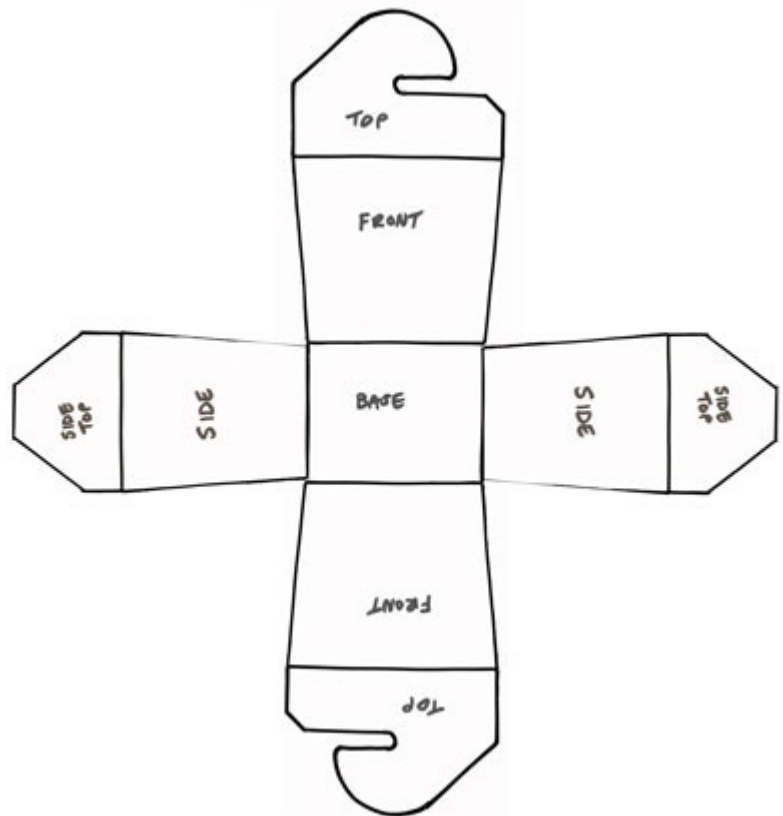
6. That's the box made.

7. Fill with chocolates.

8. Give to Marion for Christmas.

Finished box is about 4x3 inches wide and 5 inches tall.

(Steps 7 and 8 are optional.)





A hand-drawn net of a 3D container, possibly a box or a bag, consisting of three main sections. The top section is a trapezoid with a curved top edge and a small tab on the right side. The middle section is a large rectangle. The bottom section is a smaller rectangle. The sections are labeled 'TOP', 'FRONT', and 'BASE' respectively. The drawing is done in black ink on a white background.

TOP

FRONT

BASE

